








# AMG160 SERIES INDUSTRIAL ETHERNET EXTENDERS OVER COAX OR 2-WIRE WITH 30W POE



## Industrial Ethernet Solutions

AMG's Extend-Net™ industrial Ethernet extenders provide 10/100Mb Ethernet over long distances of coax or 2-wire cable with support for pass-through 30W PoE. These single channel models feature coaxial or screw terminal connectors and support distances up to 914m.



 10/100 x1	 Extender Coax x1	 Extender 2-Wire x1	 PoE 15/30W	 Temp -40°C~+75°C	 Mounting DIN/Surface	 Protection IP40
--	---	---	---	---	---	--

[ AMG160-1F-1EC / AMG160-1F-1ET ]

### / OVERVIEW

Designed in a compact tube style housing that can be DIN rail or wall mounted using the included accessory brackets, the AMG160 Extend-Net™ series industrial Ethernet Extenders are ideally suited for connecting equipment to Ethernet networks over long distances using standard Coax or 2-wire cables.

Distances up to 550m @ 100Mb speed and 914m @ 10Mb speed are possible over standard Coax cables.

The AMG160 UTP series support IEEE802.3af 15.4W and IEEE802.3at 30W PoE pass-through and are suitable for powering the latest PoE devices over a wide industrial operating temperature range at extended distances.

A 48-56V<sub>DC</sub> local power input is provided for instances where local power is available and the maximum possible PoE level is required at the remote device but this is not required for operation when used with a PoE enabled edge device such as an IP camera as the units also support pass-through PoE powering.

PSUs need to be ordered separately.

### / FEATURES

- Compact size – ideal for confined spaces, including conduit, camera poles and roadside cabinets
- -40°C to +75°C temperature maintains performance in extreme conditions
- DIP switches for Local/Remote & 10/100Mb modes
- Standalone, DIN rail or wall mountable – flexible mounting options are included with every unit
- Extends Ethernet up to 550m (1,700 ft) at 100Mbps
- Extends Ethernet up to 914m (3,000 ft) at 10Mbps
- Supports 15W & 30W PoE Pass-Through
- Unicast, Multicast & Jumbo Frames are supported along with full symmetrical bandwidth performance
- Manufactured in the United Kingdom
- AMG Lifetime Support Warranty

# Specifications.

## Standards.

IEEE802.3i	10Base-T
IEEE802.3u	100Base-TX
IEEE802.3af	15W PoE
IEEE802.3at	30W PoE+

Jumbo Frames	10Kbytes
--------------	----------

## Interface.

LED Indicators	1x Power Ethernet Link/Activity Ethernet 100Mb Speed Extend-Net™ Link/Activity
Ethernet Port	1x 10/100TX RJ45 with Auto MDI/MDI-X and 1.5 kV Isolation Protection
Extend-Net™ Port	1x BNC or 2 pin removable terminal block with Surge Protection
Power	1x 2 pin removable terminal block

## DIP Switch.

Switch Type	2 Position
Functions	10Mb or 100Mb Mode Remote or Local Operation

## Power.

Power Inputs	1
Operating Voltage	48-56V <sub>DC</sub> or PoE Pass-Through
Power Consumption	1.5W Max
Protection	Overload Current

## Extend-Net™.

Maximum Distance:	
100Mb	550m (1,700 ft)*
10Mb	914m (3,000 ft)*

\*Refer to Distance Chart

Cable Types	Coaxial or 2-Wire
-------------	-------------------

## Packaging.

Shipping Weight	0.52kg / 1.15lb
Dimensions	(W x D x H) 175 × 160 × 50 mm 6.89 × 6.3 × 1.97 in

## Mechanical.

Housing	Anodised Aluminium
Dimensions:	(W x D x H)
Excluding Wall Bracket	89 × 35 × 32 mm 3.50 × 1.38 × 1.26 in
Including Wall Bracket	113 × 35 × 35 mm 4.45 × 1.38 × 1.38 in
IP Rating	IP40
Installation	Wall Mount or DIN-Rail
Weight	0.3kg / 0.66lb

## Environmental.

Operating Temp.	-40°C to +75°C
Storage Temp.	-40°C to +85°C
Humidity	5% to 95% (non-condensing)
MTBF	>1,000,000 hours
MTBF Standard	Telcordia SR-332 GF 30°C
Heat Dissipation	5 BTU/h (No PoE) 58 BTU/h (15.4W PoE) 107 BTU/h (30W PoE)
Cooling	Passive Cooling
Noise Level	0 dBA

## Regulatory.

Safety	IEC/EN 62368-1
EMI	EN 55032 Class A CISPR 32 FCC Part 15B Class A
EMS	EN 61000-4-2 (ESD) EN 61000-4-3 (RS) EN 61000-4-4 (EFT) EN 61000-4-5 (Surge) EN 61000-4-6 (CS) EN 61000-4-8 (PFMF)
Shock	IEC 60068-2-27
Free Fall	IEC 60068-2-32
Vibration	IEC 60068-2-6 Reach, RoHS, WEEE

Designed to meet NEMA TS2 & EN 50121-4

# Part Numbers.

---

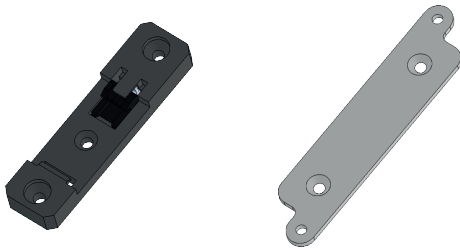
## Extend-Net™ Single Channel Industrial Ethernet Extenders over Coax or 2-Wire Cable

AMG160-1F-1EC	1 × 10/100BaseT(x) RJ45, 1 x Extend-Net™ Coax Ethernet Extender (Coaxial Connector)
AMG160-1F-1ET	1 × 10/100BaseT(x) RJ45, 1 x Extend-Net™ 2-Wire Ethernet Extender (Screw Terminal Connector)

## Included Accessories.

---

DIN Rail Adapter	Rear Mounted Plastic DIN Rail Clip & Screws For DIN Rail Mounting AMG160 Series Products (Black)
Wall Mount Adapter	Rear Mounted Aluminium Wall Mounting Plate & Screws For Wall / Surface Mounting AMG160 Series Products (Silver)



## Recommended PSUs.

---

AMGPSU-I48-P60	DIN-Rail Mounting Industrial Grade PSU, 48-56VDC, 60W
----------------	---

## Notes.

---

Distance figures are based on a 50V PSE PoE power source, and external power supplies for the extenders. Distance figures are obtained using in-house testing mirroring installations. Factors such as copper cable quality, the number of connectors and joints in the cable run, the use of PoE, and environmental conditions encountered within the installation might affect the actual transmission distance and should be taken into consideration.

*In a continuing effort to improve and advance technology, product specifications are subject to change without notice. Please visit [www.amgsystems.com](http://www.amgsystems.com) for the latest product specifications.*

Proud to be a British  
Manufacturer 